



THE NEW C-CLASS SPORTS COUPÉ



Mercedes-Benz

Concentrated power. The new C-class sports coupé

Looking for an energy boost? How about trying our latest model? Just take a look at the face of the new C-class sports coupé, with its re-interpreted twin headlamps and the flat radiator grille, and you'll find your glance accelerating across its graceful back to the muscular tail-end.

Some of the contours may look a little familiar, because the sports coupé has inherited them – along with a whole host of technical refinements – from the C-class saloon. Yet our designers have created a completely new car. So new that we've given it its own name: the "sports coupé".

Of course the prefix "sports" doesn't just refer to the look. That's something you'll notice as soon as you get behind the wheel and put the athletic CDI engine or the beefy compressor engine through its paces. To complement these, there is the optional SEQUENTRONIC, a new sequential manual transmission from Mercedes-Benz. It's based on the ones used in our DTM racing cars and ideal for winding roads the world over. And while you're enjoying all this, you can top up your tan cabriolet-style: with the panoramic sunroof.







*Sunlight streams
through the
panoramic sunroof:
a clear view of the
sky above is available
as an optional extra*

The word "sports" in front of "coupé" is not just a question of styling. It's the heart and soul of this car









*The sports coupé
may only have three
doors, but there's
plenty of room for four*

*Taut contours from
start to finish*











*Similarities with
the C-class saloon
are no coincidence.
But the face is
pure sports coupé*

The ultimate in sportswear

Top-quality sports centre: the interior

One look at the new-design sports seats, and the distinctive character of the interior is immediately apparent. The multifunction steering wheel, with three spokes, is unique to this particular Mercedes. And the instrument cluster surround is typical sports car, following the curves of the instrument dials. There are sporty fabric designs to choose from, with leather as an option.

If you like to share your fun with others, you'll love the roomy rear. Two passengers seated here can easily forget that they are in a coupé. The EASY ENTRY function greatly improves access to the rear seats.

There is also more than enough room for your luggage on board. The luggage compartment has a capacity of 310 litres. And you can treble this by folding down the rear bench, which splits 1/3 to 2/3. Practical for bulky luggage: the large boot lid.

The extensive standard safety package means you will feel well-protected out on the road. It not only includes handling control systems such as ESP® and BAS but also driver and front passenger airbags, sidebags and windowbags.

Fresh air in abundance: the panoramic sunroof

The optional panoramic glass sunroof gives you an even greater sense of space inside. It also improves rear visibility. It consists of three panels: the central one simply slides above the rear glass section at the touch of a button, producing an impressively large opening. Two electric blinds provide protection from the sun.

High performance without the effort: the engines

There is a choice of four engines - with outputs ranging from 95 to 145 kW (129 to 197 hp). The choices start with the C 180 petrol model. Then there's the athletic 2.2-litre CDI diesel engine with common rail direct injection. The supercharged engines round off the range - the C 230 KOMPRESSIONER, for instance, develops 145 kW at 5500 rpm. Something to really put a smile on your face.

The new, optional SEQUENTRONIC is an ideal extra. With this slick sequential manual transmission there is no need to use the clutch. To change gear, all you have to do is nudge the gearshift lever to one side, and the electronics take care of the rest.



1.



2.



3.



4.

- 1. You've never had so much sun: the optional panoramic sunroof opens remarkably wide
- 2. Sporty driving in comfort: the sports seats
- 3. There's ample room for two passengers in the rear. The EASY ENTRY system improves access
- 4. Space for your suitcases: the roomy luggage compartment holds 310 litres





*Welcome to the interior,
with its 3-spoke
steering wheel,
distinctive instrument
cluster and "Facetto"
aluminium trim.
The only thing missing
here is you*

The equipment for the new C-class sports coupé

Standard equipment (selection)

3-point seat belts for all seats
3-link front axle with rack-and-pinion steering
6-speed manual transmission
16" steel wheels with wide-base tyres ¹
Airbag with 2-stage deployment for driver and front passenger
Aspherically convex exterior mirrors, heated and electrically adjustable
Brake system, with ABS and BAS control systems
Cruise control with SPEEDTRONIC
EASY ENTRY function for rear passengers
Electronic Stability Program (ESP*), including ASR function
Immobiliser with ELCODE locking system and infrared remote control
Light sensor
Multifunction steering wheel, 3-spoke design, with control buttons
Power steering with safety steering column
Seat belt tensioners and belt force limiters for driver and passengers
Sidebags for driver and front passenger
Sports seats (individual-style rear seats with fold-down armrests)
Steering column manually adjustable for height and reach
Windowbags

Optional extras (selection)

5-speed automatic transmission
Anti-theft alarm system (ATA) with tow-away protection
Audio 10 radio with CD/cassette player
Audio 30 APS radio
Auxiliary heating with remote control
COMAND, control and display system for radio/navigation
Evolution AMG sports package
Evolution sports package
LINGUATRONIC
Memory package for driver's seat, steering column and exterior mirror settings
Panoramic sunroof with integral wind deflector (electric)
PARKTRONIC
TELEAID emergency call system
THERMATIC automatic climate control
THERMOTRONIC luxury automatic climate control
Rain sensor for windscreen wipers
Rear sidebags
SEQUENTRONIC

¹ 16" light-alloy wheels in twin-spoke design, with wide tyres, are standard on the C 230 KOMPRESSOR



The optional "Evolution" sports package allows you to emphasise the sports coupé's character even further. It includes 17"-light-alloy wheels with 225/45 tyres and interior details such as studded pedals in brushed stainless steel. For an even more dynamic look, you can opt for the "Evolution AMG" sports package, shown here. It additionally includes AMG styling and, in place of the wheels listed above, 17"-AMG light-alloy wheels with 225/45 tyres at the front and 245/40 tyres at the rear

Technical data

	<i>C 220 CDI</i>	<i>C 180</i>	<i>C 200 KOMPRESSOR</i>	<i>C 230 KOMPRESSOR</i>
No. of cylinders/arrangement	4/in-line	4/in-line	4/in-line	4/in-line
Total displacement (cc)	2148	1998	1998	2295
Rated output (kW at rpm) ¹	105/4200	95/5300	120/5300	145/5500
Rated torque (Nm at rpm) ¹	315/1800-2600	190/4000	230/2500-4800	280/2500-4800
Compression ratio	18.0	10.6	9.5	9.0
Alternator (V/A)	14/190	14/120	14/120	14/120
Acceleration 0-100 km/h (s)	10.3	11.0	9.3	8.0
Top speed, approx. (km/h)	220	210	230	240
Tyre size	205/55 R 16	205/55 R 16	205/55 R 16	205/55 R 16
Fuel consumption (l/100 km) ²				
city/extra-urban	8.8/4.7	13.9/6.8	14.3/7.0	15.3/7.2
combined	6.2	9.4	9.7	10.2
CO ₂ emissions (g/km) ²	163	225	232	245
Tank capacity (l), incl. reserve, approx.	62/8	62/8	62/8	62/8
Turning circle diameter (m)	10.76	10.76	10.76	10.76
Kerb weight ³ /perm. gross vehicle weight (kg)	1505/1930	1445/1870	1480/1905	1500/1925

All figures are provisional data

¹ Figures according to Directive 80/1269/EEC, version 1999/99/EC

² Figures according to Directive 80/1268/EEC, version 1999/100/EC

³ Figures according to Directive 92/21/EC, version 1995/48/EC (weight in ready-to-drive condition, fuel tank 90% full, with driver, 68 kg, and luggage, 7 kg) for standard-specification vehicles. Optional extras and accessories will generally increase this figure and reduce the payload

The combination options for paints and upholstery

	<i>"Ascor" fabric</i> quartz/dark quartz quartz/yellow anthracite/blue anthracite/green anthracite/red anthracite/grey						<i>Leather</i> anthracite quartz	
<i>Standard finishes</i>								
black	●	●	●	●	●	●	●	●
magma red	○	△	△	△	○	●	●	○
alabaster white	○	△	○	△	○	●	●	○
<i>Metallic finishes</i>								
green black	●	●	△	△	△	●	●	●
obsidian black	●	●	●	●	●	●	●	●
jasper blue	○	△	●	△	△	●	●	○
tanzanite blue	○	○	●	△	△	●	○	○
aventurine orange	○	△	△	△	●	●	●	○
titanite red	●	△	△	△	○	●	●	●
travertine beige	○	△	△	△	△	●	●	○
brilliant silver	△	△	●	△	●	●	●	△
hellodor green	○	△	△	●	△	●	●	○

● recommended

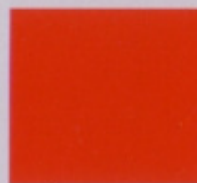
○ possible

△ not recommended

Standard finishes



040 black



586 magma red



960 alabaster white¹

Metallic finishes
optional extra



189 green black



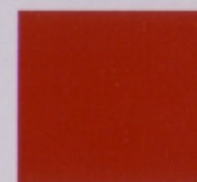
197 obsidian black



345 jasper blue



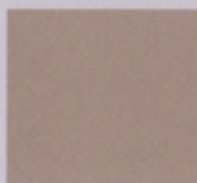
359 tanzanite blue



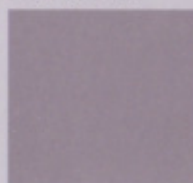
487 aventurine orange



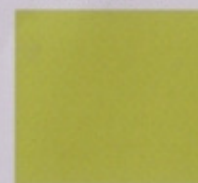
567 titanite red



693 travertine beige



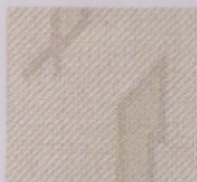
744 brilliant silver



800 heliodor green

¹expected to become available from June 2001

"Ascot" fabric



015 quartz/dark quartz



019 quartz/yellow



032 anthracite/blue



036 anthracite/green



037 anthracite/red



038 anthracite/grey

Leather
optional extra



201 anthracite



205 quartz

Please note: changes may have been made to the product since this brochure went to press on 31.07.00.
The illustrations may show accessories and items of optional equipment which are not part of the standard specification.
This brochure is distributed internationally. Details concerning standard specification and optional extras may vary from country to country.
Colours may differ slightly from those shown owing to the limitations of the printing process.
Information given regarding statutory regulations, legal requirements and taxation applies to the Federal Republic of Germany only.
Please therefore consult your Mercedes-Benz dealer for final details.